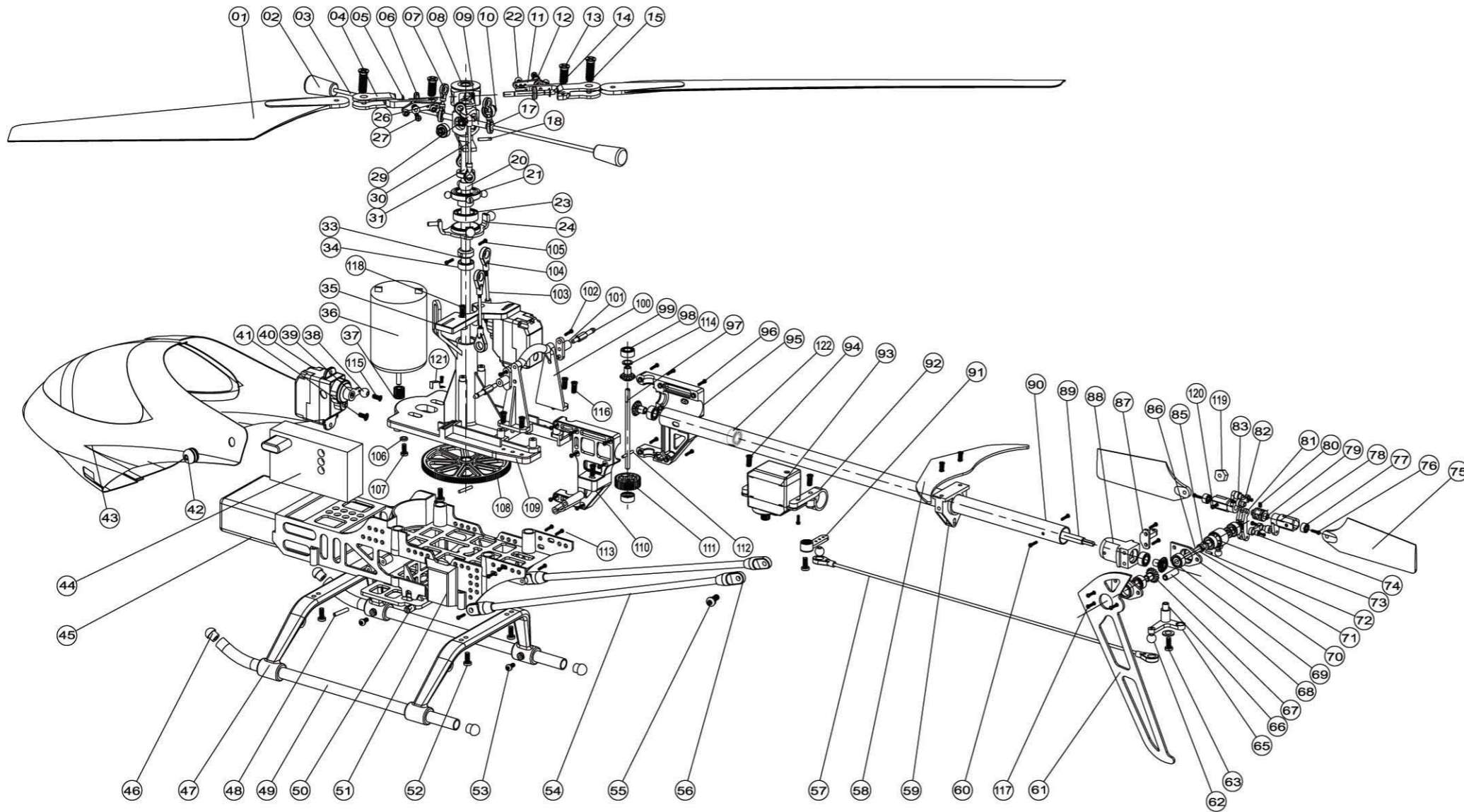


HM-CB180Z爆炸图



Part code	Description	Specifcagion	Q'ty
1	main blades		2
2	Balance block		2
3	Blybar rod		1
4	Main blade holder		2
5	E-type circlip		2
6	Rubber ring		2
7	Ball linkageA		6
8	Rotor head		1
9	Flybar rod plastic holder		1
10	Cross recessed Countersunk Flat head screw	LS-KM2X4	2
11	Bellcrank		2
12	Copper sleeve		2
13	Cross recessed Countersunk Flat head screw	LS-KM1.6X4	2
14	Main blade shaft		1
15	Cross recessed Pan head screw	LS-PM2X6	2
16			
17	linkage rod B		2
18	Pin		2
19			
20	Copper ball		1
21	inner plate		1

Part code	Description	Specifcagion	Q'ty
22	Steel ball		5
23	Bearing	ZC-60000-2Z-7X13X4	1
24	swashplate		1
25			
26	Ball linkage B		2
27	Cross recessed Pan head screw	LS-PM1.4X6	4
28			
29	Ball linkage C		2
30	Ball linageA		2
31	Hollow shaft		1
32			
33	Locking sleeve		1
34	Bearing	ZC-60000-2Z-4X7X2.5	2
35	Servo holder		1
36	Main motor		1
37	Motor gear		1
38	Aluminum ball		2
39	Servo pull rod		2
40	servo		2
41	tapping screw with washer	LS-PWA1.7X4	3
42	Rubber retainer ring		2

Part code	Description	Specifcagion	Q'ty
43	Canopy(A/B/C)		1
44	Receiver		1
45	Battery		1
46	landing connector		4
47	skid landing		2
48	Battery holder pilar bolt		1
49	Aluminum pipe		2
50	battery frame B		1
51	Conopy holder		1
52	Cross recessed pan head tapping screw	LS-PA1.7X8	4
53	Cross recessed pan head tapping screw	LS-PA1.4X3	4
54	Tail strut		2
55	Cross recessed pan head tapping screw	LS-PA2.0X8	2
56	Tail strut connector		4
57	tail strut		1
58	horizontal stabilizer		1
59	stabilizer holder		1
60	Cross recessed Pan head screw	LS-PM1.6X3	2
61	Vertical stabilizer		1
62	steel ball B		2
63	Cross recessed Pan head screw	LS-PM1.6X10	1

Part code	Description	Specifcagion	Q'ty
64			
65	tail control arms		1
66	sleeve C		1
67	cone-shaped gear		4
68	pin		1
69	Bearing	ZC-60000-2Z-2X6X2.5	2
70	tail gear frame socket		2
71	tail axle locking block		1
72	pin B		1
73	tail steering set		1
74	sleeveA		2
75	Tail blade		2
76	Cross recessed Pan head screw	LS-PM1.4X4	4
77	Bearing	ZC-60000-2Z-1.5X4X2	2
78	tail blades holder		2
79	tail connecting socket		1
80	hexagonal pointless locking screw	LS-GB/T77-M2*2	1
81	tail connecting pole		1
82	tail control connecting pole		2
83	sleeve B		2
84			
85	tail steering knot		1
86	tail axle 2		1
87	tail bellcrank socket		1
88	tail gear holder		1
89	transmission axle		1
90	Tail boom		1
91	servo bellcrank		1
92	servo holder		2
93	highspeed servo		1
94	Cross recessed pan head tapping screw	LS-PA1.75X6	6
95	tail boom holder1		1
96	Cross recessed pan head tapping screw	LS-PA1.4X5	7
97	tail axle 1		1
98	Bearing	ZC-60000-2Z-3X6X2.5	8
99	fixing board 1		1
100	canopy pole		2
101	fixing board 2		2
102	Cross recessed pan head tapping screw	LS-PA1.7X5	6
103	linkage C		2
104	steering pole		4
105	Cross recessed pan head tapping screw	LS-PB1.4X2.2	2
106	hexagonal socket head cap screw	LS-GB/T70.1-M2X4	2
107	small washerA class		2
108	main gear		1
109	main body		1
110	tail holder 2		1
111	tail straight gear		1
112	pin 2		1
113	tapping screw with washer	LS-PWB1.7X4 (φ4)	8
114	gear washer		2
115	Cross recessed pan head tapping screw	LS-PB1.4X5	2
116	cross socket head tapping screw	LS-KB1.6X4	5
117	Cross recessed Pan head screw	LS-PM1.6X4	6
118	Cross recessed pan head tapping screw	LS-PA1.4X4	2
119	hexagonal nut	M1.6	2
120	Cross recessed Pan head screw	PM1.6X6.5	2
121	thread nip		1
122	Bearing	ZC-6000-2Z-3X7X3	1