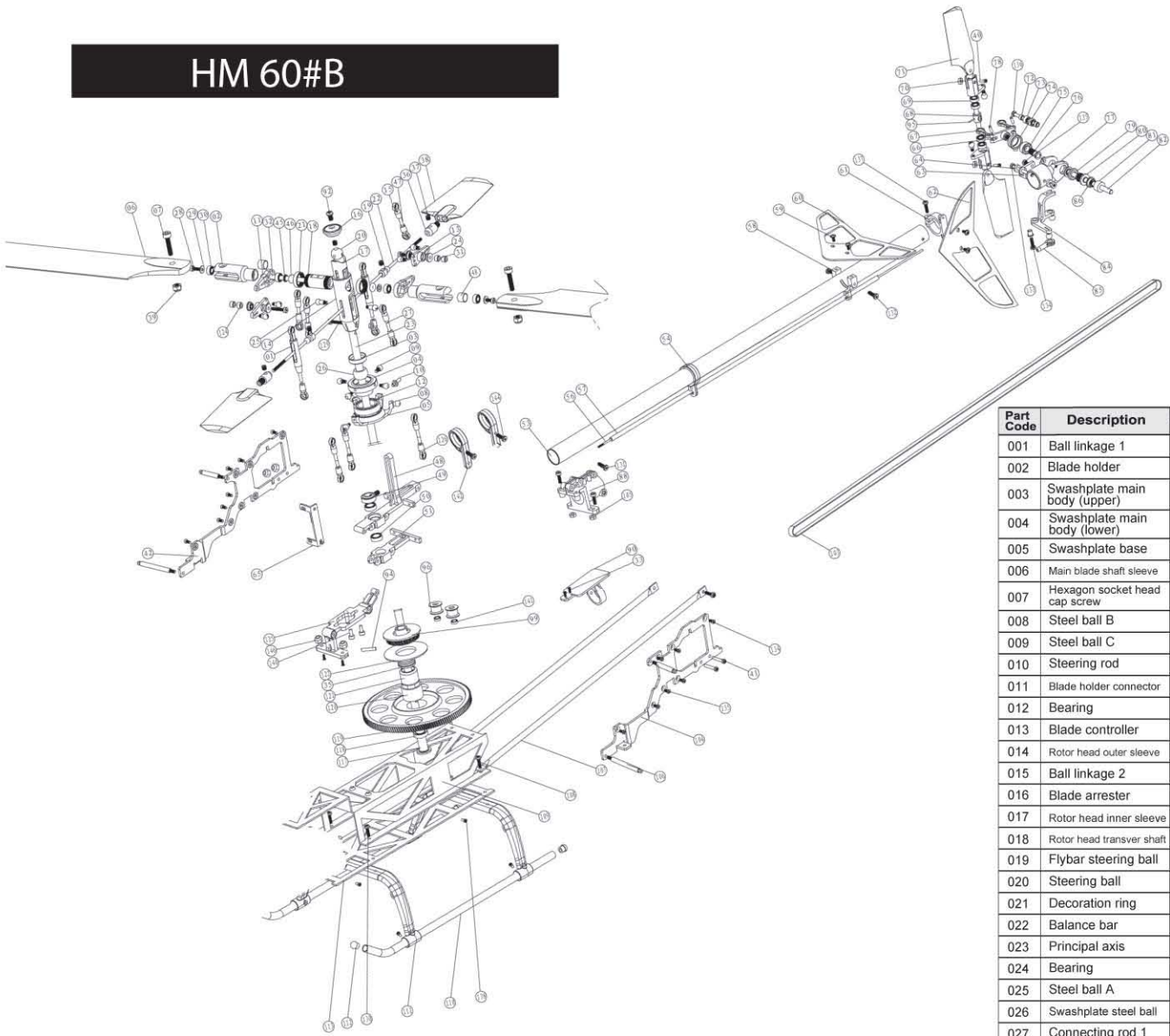


HM 60#B



Part Code	Description	Specification	Qty
001	Ball linkage 1		2
002	Blade holder		2
003	Swashplate main body (upper)		1
004	Swashplate main body (lower)		1
005	Swashplate base		1
006	Main blade shaft sleeve		2
007	Hexagon socket head cap screw	M3*10	2
008	Steel ball B		9
009	Steel ball C		4
010	Steering rod		1
011	Blade holder connector		2
012	Bearing	Φ12*Φ18*4	1
013	Blade controller		2
014	Rotor head outer sleeve		1
015	Ball linkage 2		6
016	Blade arrester		1
017	Rotor head inner sleeve		1
018	Rotor head transver shaft		1
019	Flybar steering ball		2
020	Steering ball		1
021	Decoration ring		2
022	Balance bar		1
023	Principal axis		1
024	Bearing	Φ2*Φ5*2	4
025	Steel ball A		2
026	Swashplate steel ball		1
027	Connecting rod 1		5
028	Hexagon socket head cap screw	M2*6	6
029	Plain washer (class C)		2
030	Bearing	Φ3*Φ6*2.5	4
031	Fixing sleeve		2
032	Main blade shaft		1
033	Cross recessed pan head tapping screw	PA1.4*3.5	3
034	Cross recessed countersunk flat head screw	KB2*4	6
035	Thrust bearing	Φ6*Φ12*4.5	1
036	Balance block		2
037	Hexagon socket pan head locking screw	M3*3	9

Part Code	Description	Specification	Qty
038	Flybar paddle		2
039	Locking socket nut	M3	2
040	Cross recessed pan head screw	PM2*10	2
041	Cross recessed pan head screw	PM2*14	4
042	Main frame (L)		1
043	Hexagon socket head cap screw	M2*12	8
044			
045	Plain washer		2
046	Rubber ring		2
047	Pointless locking screw	M2*8	4
048	Upper main shaft holder		1
049	Retaining aluminum ring		1
050	Bearing	Φ5*Φ8*2.5	2
051	Lower main shaft holder		1
052			
053	Tail boom		1
054	Horizontal stabilizer holder		1
055			
056	Rudder servo rod (long)		1
057	Rudder servo rod sleeve		1
058	Horizontal stabilizer holder		1
059	Tapping screw with swasher	PWB1.7*4	4
060	Horizontal stabilizer		1
061	Vertical stabilizer holder		1
062	Vertical stabilizer		1
063	Tail gear holding fixer B		1
064	Tail gear holding fixer A		2
065	Single-servo holding frame		1
066	Control bridge		1
067	Tail blade ball linkage		2
068	Tail blade connecting sleeve		1
069	Bearing	Φ3*Φ6*2	4
070	Aluminum tail blade holder		2
071	Tail rotor blade		2
072	Bearing locating ring		2
073	Bearing	Φ2*Φ6*2.5	2
074	Tail shaft steering holder		1
075	Bearing	Φ4*Φ8*3	1
076	Tail Blade Sleeve		1
077	Tail gear holder		1
078	Cylindrical Pin 5	Φ1.5*5.8	2
079	Small pulley cover		1
080	Small pulley		1
081	Tail shaft holder		1
082	Tail shaft		1
083			
084	Rudder rod bellcrank		1
085	Long linkage		2
086	Step Bearing	Φ3*Φ6*2.5	2
087			
088	Tail boom holder		1
089			
090	Gyro holding frame		1

Part Code	Description	Specification	Qty
091	Main frame locating part		2
092	Cross recessed pan head screw	M2*6	1
093			
094	Main shaft pin	Φ2*10.5	1
095	Pin		1
096	Pulley		2
097			
098	Twin-servo holding frame		2
099	Drive pulley cover		
100			
101			
102	Cross recessed pan head tapping screw	PB1.4*5	6
103	Toothed synchronmesh belt		1
104	Main frame (R)		1
105	Type-1 hexagonal nut	M2	21
106	Canopy fixed part A		4
107	Tail strut		2
108	Cross recessed pan head tapping screw	PA2*7	2
109	Main frame (side)		1
110	Skid landing gear		2
111	Skid landing		2
112	Casing cap		4
113	Main frame		1
114			1
115			1
116			1
117	Principle axis sleeve		1
118	Bearing	Φ6*Φ10*2.5	1
119	Main gear set		1
120	Main gear shaft sleeve		1
121	Oneway bearing	Φ6*Φ12*10	1
122	Drive pulley cover		1
123			
124	Bearing transmission sleeve		2
125	Motor holder A		1
126	Ball linkage 3		10
127			
128	Motor holder B		1
129	Hexagon socket head cap screw	M2*10	1
130	Cross recessed pan head tapping screw	PA2*6	2
131	Cross recessed countersunk flat head screw	KM2*7	2
132	Cross recessed pan head tapping screw	PA1.75*6	2
133	Hexagon socket head cap screw	M2*20	1
134	Cross recessed pan head screw	PM2*8	4
135	Cross recessed pan head screw	PM2*5	1
136	Hexagon socket head cap screw	M2*14	1
137	Cross recessed pan head tapping screw	PB2*6	1
138	Cross recessed pan head tapping screw	PA1.4*3	4
139	Cross recessed screw with washer	PWB1.7*3	4
140	Hexagon socket head cap screw	M2.5*6	2
141	Bearing	Φ2*Φ5*2.5	2
142	Vertical stabilizer		2
143	Cross recessed pan head screw	M2*4	3
144	Cross recessed pan head tapping screw	PA2*8	2
145	Cross recessed countersunk flat head screw	M2*5	2