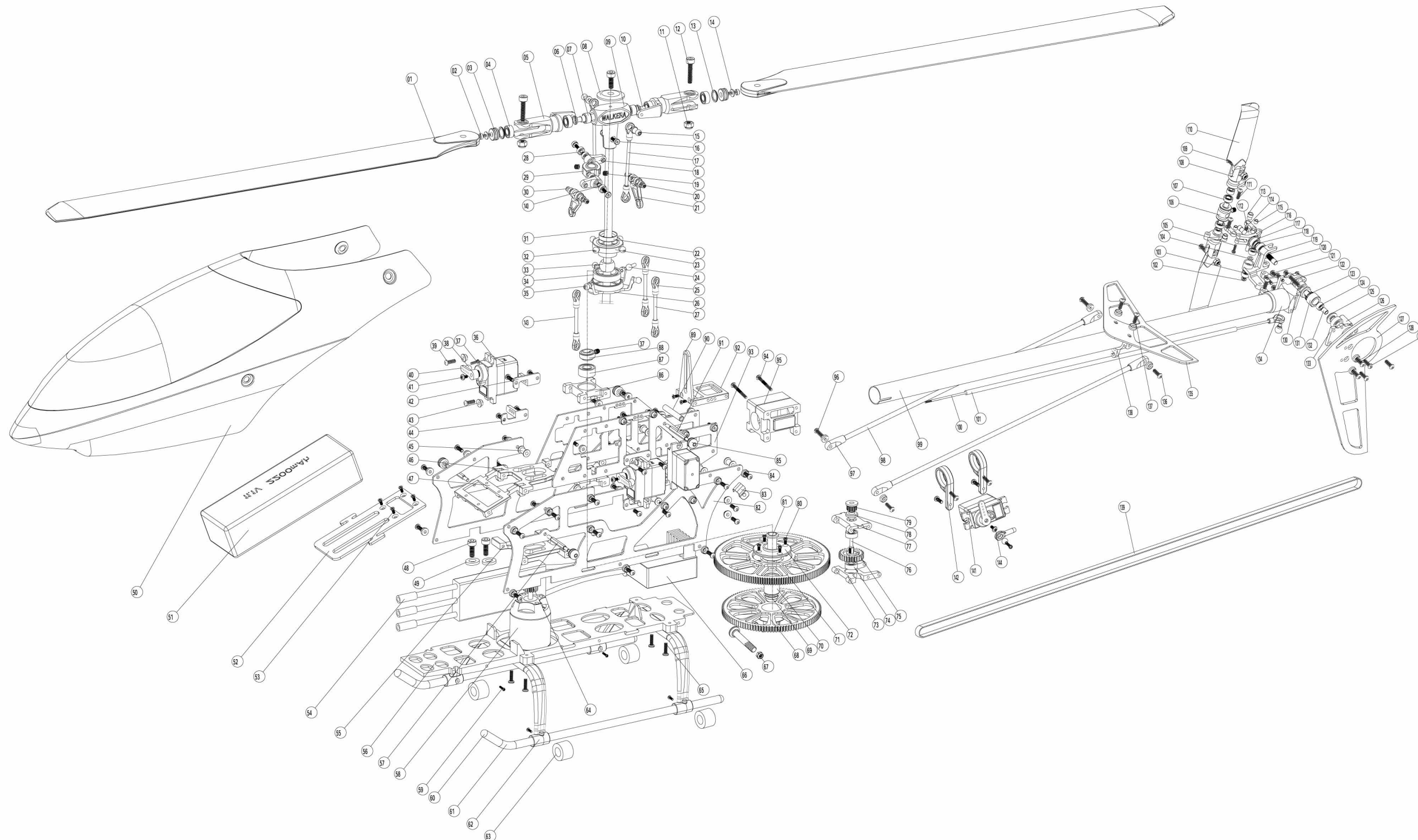


V450D01



144	Tapping Screw With Washer	LS-PWB1.7X4	1
143	Ball Link Rod3		1
142	Tail servo block		2
141	9g Hi-speed digital servo		1
140	Bearing sleeve		2
139	Toothed synchromesh belt		1
138	Horizontal stabilizer holder		1
137	Hexagon Flat Round Head Tapping Screw	ST2X6(平端)	6
136	Hexagon Flat Round Head Tapping Screw	ST2X8(尖端)	4
135	Horizontal stabilizer		1
134	tail gear Frame Fixing block		1
133	Tail Gear Frame Fixer 2		1
132	Idler Pulley sleeve		2
131	Idler Pulley		1
130	Hexagon Flat Round Head Screw	LS-GB/70.2 M2X14	13
129	Hexagon Flat Round Head Screw	LS-GB/70.2 M2X4	10
128	Hexagon Flat Round Head Screw	LS-GB/70.2 M2X6	4
127	Vertical Stabilizer		1
126	supporting pin B		1
125	Tail Pulley Cover		2
124	Bearing	ZC-60000-2Z-2*5*2.5	5
123	Tail Pulley		1
122	Tail Gear Frame Fixer 1		1
121	Tail blade linkage holder		1
120	Tail shaft		1
119	Tail Blade Sleeve		1
118	sleeve C		1
117	Bearing	ZC-60000-2Z-4*7*2.5	2
116	Tail Rotor Rotation Bellcrank		1
115	sleeve A		2
114	Tail Rotor Connecting Shaft		2
113	sleeve D		2
112	Tail Rotor Steering Sleeve		1
111	Hexagon Socket Head Cap Screw	LS-GB/70.1 M2X8	2
110	Tail Rotor Blade		2
109	Hexagon Socket Head Cap Screw	LS-GB/70.1 M2X9	3
108	Tail Rotor Blade Holder		2
107	Bearing	ZC-60000-2Z-3*6*2	2
106	Tail blade connector		1
105	Cross recessed pan head screw	LS-PM1.6X6	2
104	sleeve B		1
103	Tail Rotor Bellcrank		1
102	Hexagon Socket Head Cap Screw	LS-GB/70.1 M2X12	1
101	Rudder Servo Rod Sleeve		1
100	Rudder servo rod (long)		1
99	Tail Boom		1
98	Tail Strut		2
97	Tail Strut Tie-in		4
96	Hexagon Flat Round Head Tapping Screw		2
95	Tail strut holder		1
94	Hexagon Socket Head Cap Screw	LS-GB/70.1 M2X20	2
93	Main frame (A)		2
92	Guiding frame fixer		1
91	Canopy Knighthead 2		2
90	supporting pin C		2
89	Guiding frame		1
88	Fixing Aluminum Ring		1
87	Bearing	ZC-60000-2Z-5*11*5	2
86	Main frame Knighthead 1		2
85	Rubber Retainer Ring		4
84	Decorative cap		40
83	Wire Clamp		1
82	Main frame (B)		2
81	Oneway bearing sleeve		1
80	Cross Recessed Counter Sunk Head Screw	LS-KB2X5	4
79	Tail driven gear		1
78	Tail drive belt cap		1
77	Main frame Knighthead 2		1
76	Tail drive shaft		1
75	Tail driven gear		1
74	Bearing	ZC-60000-2Z-3*8*3	4

Part Code **Description** **Specification** **Q'ty**

73	Main frame Knighthead 3		1
72	upper gear centre holder		1
71	Gear (Upper)		1
70	Oneway bearing		1
69	Main Gear Shaft Sleeve		1
68	Gear (lower)		1
67	Hexagon Locknut		5
66	Receiver		1
65	Hexagon Flat Round Head Tapping Screw		4
64	Pinion gear		1
63	Skid Landing Gear Holder		4
62	Skid Landing tube		2
61	Skid Landing tube		2
60	Skid Landing tupe cap		4
59	Cross Recessed Pan Head Tapping Screw	LS-PA1.4X3	4
58	Outer runner brushless Motor		1
57	Canopy Knighthead 1		2
56	Main frame underlay		1
55	Motor holder 2		1
54	Brushless speed controller		1
53	Cross Recessed Counter Sunk Head Screw	LS-KM2X4	6
52	battery backing plate		1
51	Battery		1
50	Canopy		1
49	Plain washer(class C)		2
48	Hexagon Socket HeadCap Screw	LS-GB/T70.1 M3X6	2
47	battery holder		1
46	Motor holder 1		1
45	Tail strut		10
44	Servo Holding Frame 1		2
43	Servo Holding Gasket		6
42	Servo Holding Frame 2		2
41	Hexagon Flat Round Head Screw	LS-GB/70.2 M2X4	3
40	9G special swing arm		4
39	Hexagon Flat Round Head Screw	LS-GB/70.2 M2X5	30
38	Steel Ball3		1
37	Hexagon Socket Plain Locking Screw	LS-GB/T77 M3X3	2
36	9g-8 Servo		3
35	Steel BallB		2
34	Bearing	ZC-60000-2Z-12*18*4	1
33	Swashplate Steel Ball		1
32	Steel Ball 4		4
31	Main Blade Shaft		1
30	Cross recessed pan head screw		4
29	Stabilizer holder		1
28	Bearing	ZC-60000-2Z-2*5*2	4
27	Ball Link Rod 2		2
26	Swashplate Base		1
25	Ball Linkage Joint		10
24	Steering rod		1
23	Swashplate Body (Lower)		1
22	Swashplate Body (Upper)		1
21	Orientation ball linkage connector		2
20	Bearing	ZC-60000-2Z-1.5*4*2	4
19	Hexagon Socket Plain Locking Screw	LS-GB/T77 M3X4	2
18	Swing arm		2
17	Ball linkage 1		2
16	Hexagon Socket HeadCap Screw		2
15	Steel Ball1		2
14	Plain Washer (Class C)		2
13	Bearing sleeve B		2
12	Hexagon Socket HeadCap Screw	LS-GB/T70.1 M3X14	2
11	Hexagon Locknut		2
10	Main blade cross shaft		1
9	Rotor head		1
8	Rotor Head Cover		1
7	O-shape washer		2
6	Bearing sleeve A		2
5	Blade Holder		2
4	Bearing	ZC-60000-2Z-3*8*4	4
3	Thrust Bearing	ZC-60000-2Z-3*8*3.5	2
2	Hexagon Socket HeadCap Screw	LS-GB/T70.1 M2X6	4
1	Main Rotor Blade		2

Part Code **Description** **Specification** **Q'ty**